

Check Gradebook

to see if your math grades are correct.

HW Notes Worksheets

Formative Can redo to raise grade to 100%

Summative Can retake to raise grade to 85%

Quiz

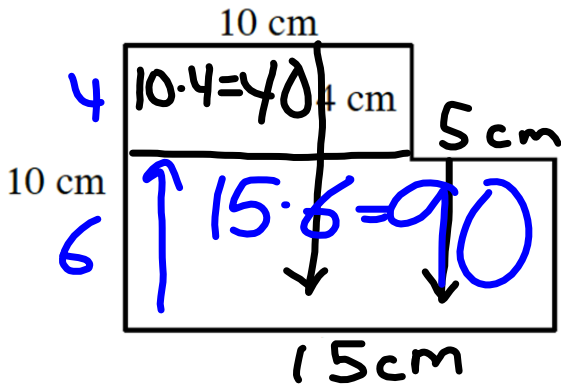
Answers To Last Week's Quiz

1. 25%

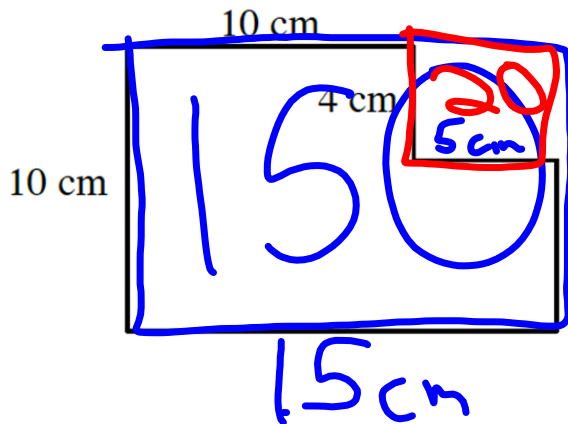
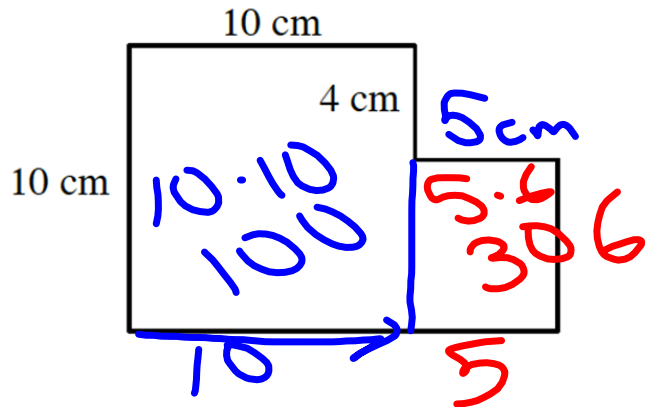
2. Mean = 12, Median = 11

3. $\frac{5}{16}$ 4. 18 in^2 5. 80 in^2

130 cm² 10/15



130 cm²



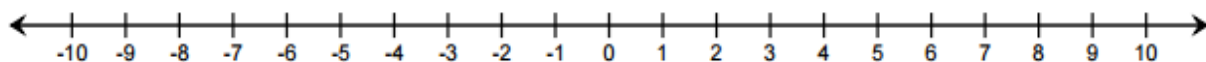
150
- 20

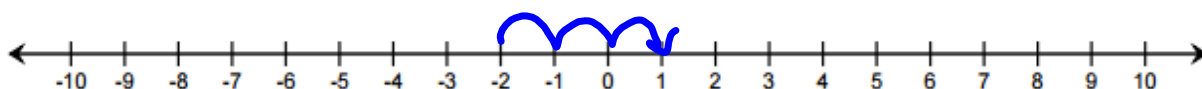
130
cm²

Integers

10/15

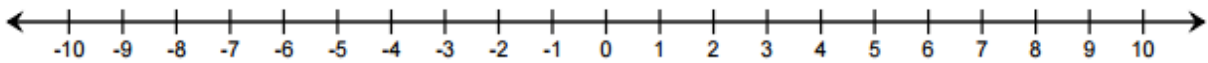
....., -3, -2, -1, 0, 1, 2, 3,





$$-2 + 3 = 1$$

How can you represent $-2 + 3$ on a number line?



Use your number line to simplify each expression.

$$-5 + -3$$

$$-8$$

$$7 + -9$$

$$-2$$

$$-4 + 10$$

$$6$$