

Pre-Algebra Homework 2 Quiz

1) 82

2) 42

3) $\frac{3}{8}$ *Show why.*

4) 374 cm^2

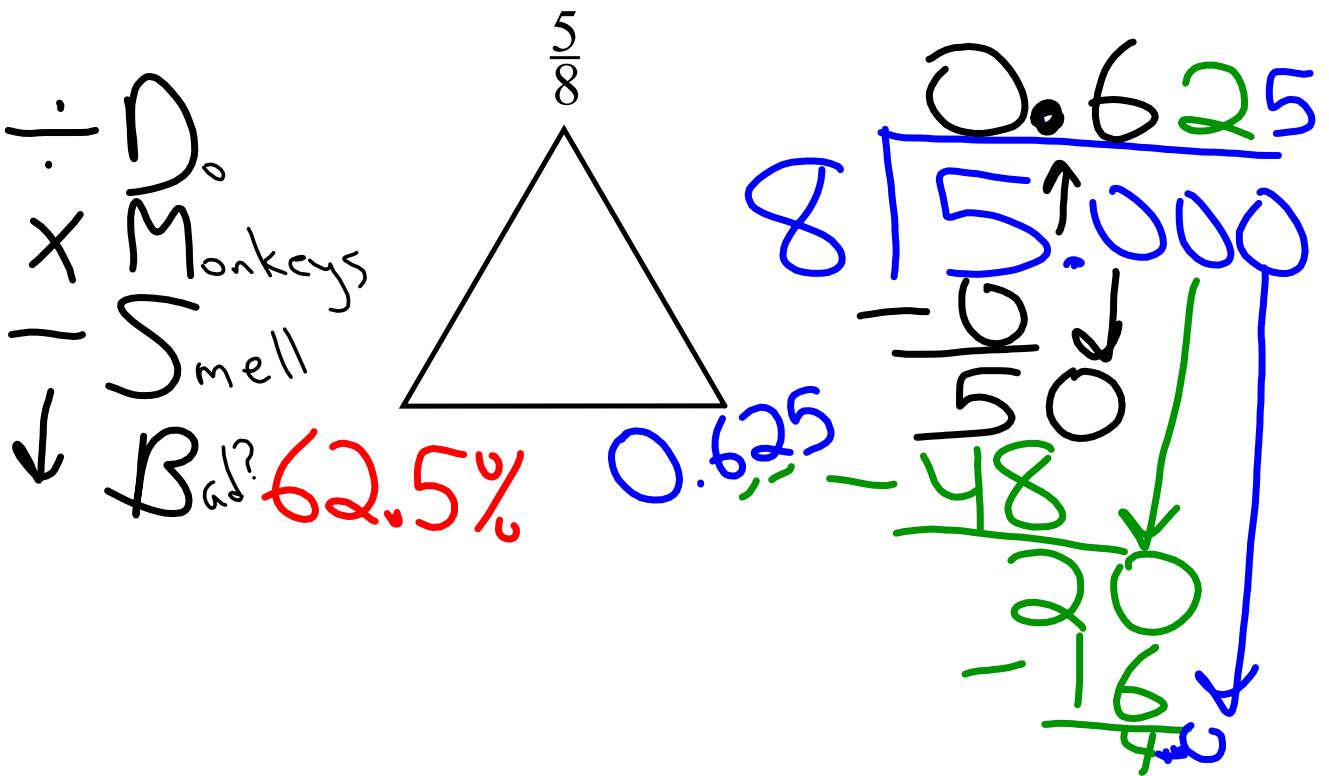
5) 30 in^2

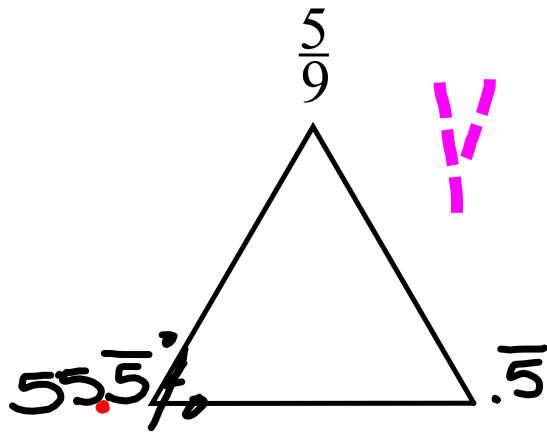
$\frac{10}{7}$

$\frac{2}{10} \cdot \frac{10}{2} = \frac{20}{100}$

$\frac{8}{40} \div \frac{2}{2} = \frac{4}{20} \cdot \frac{5}{5} = \frac{20}{100}$

0.20 20%





$$\begin{array}{r} 9 \overline{) 5.00} \\ \underline{45} \\ 50 \\ \underline{45} \\ 5 \end{array}$$

Handwritten long division of 5.00 by 9, showing a quotient of $.55\overline{5}$. The quotient is written above the line, with a red underline under the final 5 . The remainder 5 is shown below the final subtraction step.