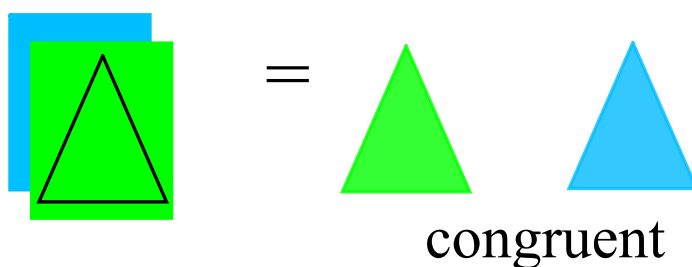


Cut two congruent triangles out of blue and green paper layered together.



Can you make a parallelogram with your two triangles?

Yes!



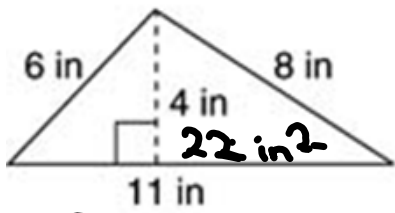
Every triangle is half of a parallelogram.

Natalee

$$\text{triangle area} = \text{base} \cdot \text{height} \cdot \frac{1}{2}$$

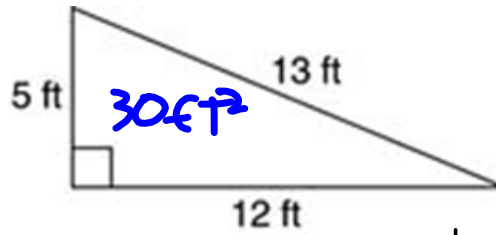
$$\text{triangle area} = \text{base} \cdot \text{height} \div 2$$

Leviticus



$$11 \cdot 4 \div 2$$

(a)

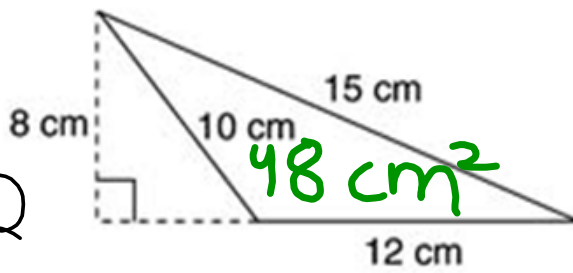


30 ft<sup>2</sup>

12 ft

(b)

$$\frac{1}{2} \text{ of } 12 \cdot 5$$



$$12 \cdot 8 \div 2$$

(c)